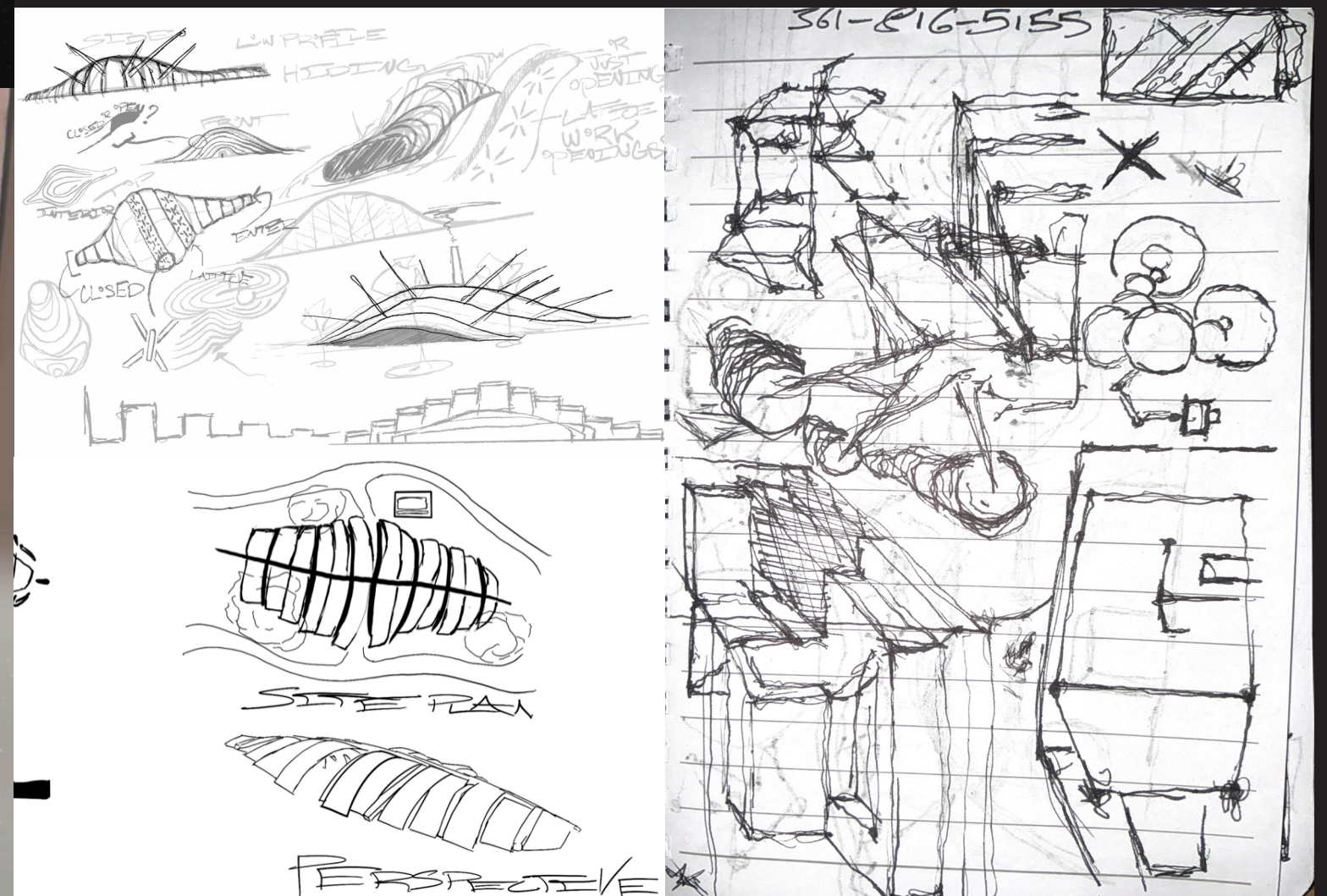
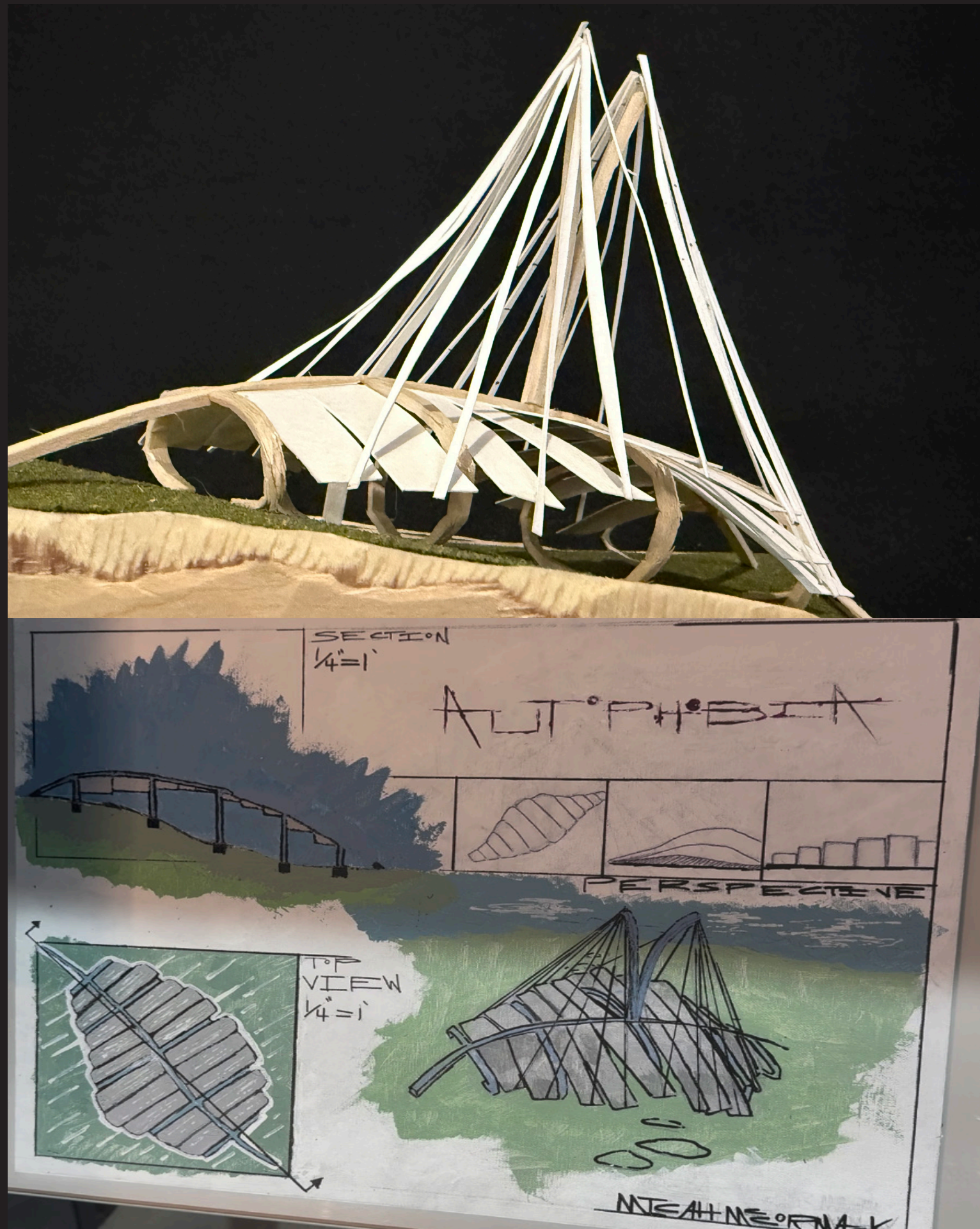
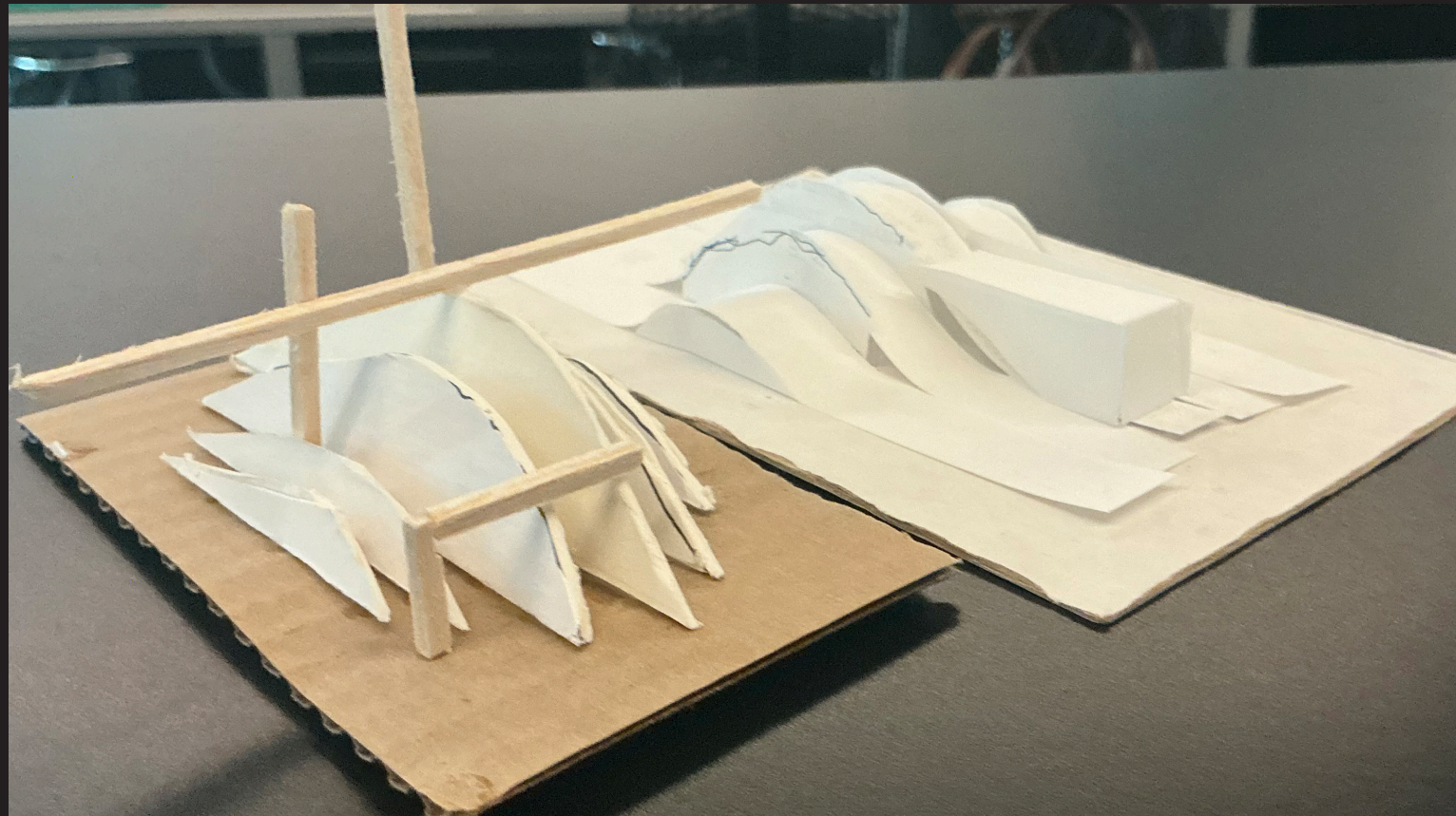


FOLLY

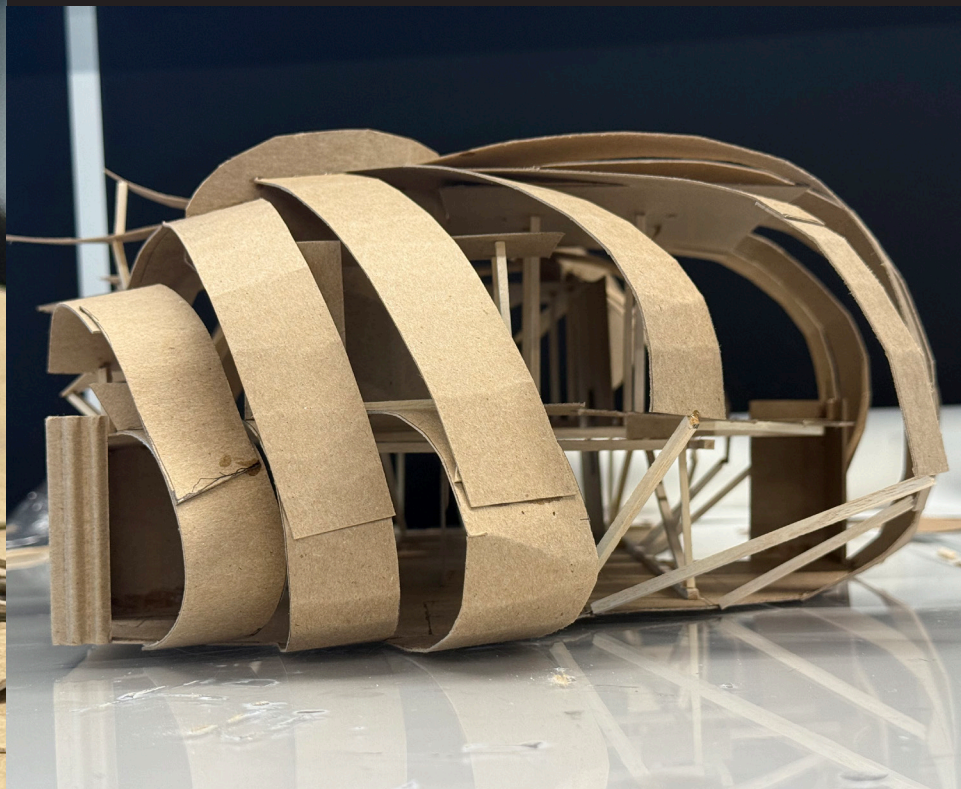
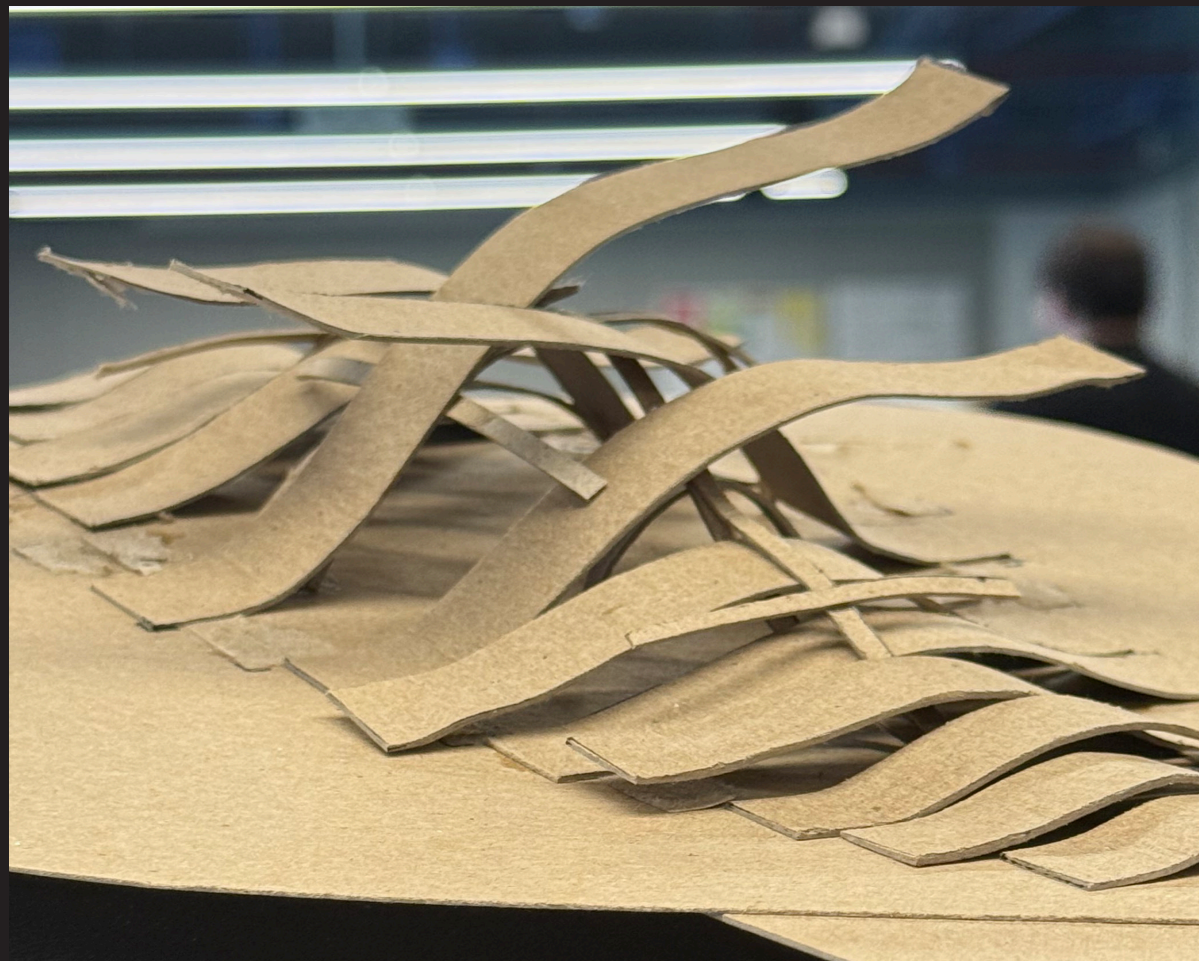
THE FOLLY, MY FIRST PROJECT OF THIS STUDIO. BASED OFF OF THE SONG "SMOKE AND SORCERY" BY THE DEVILS WITCHES THAT WOULD INFORM THE DESIGN LANGUAGE OF THE TWO LARGEST PROJECTS OF THIS SEMESTER, I TITLED THIS PIECE 'AUTOPHOBIA', MEANING A FEAR OF THE SELF, IN REFERENCE TO THE THEMES OF DISTRACTION AND OBSCURITY THAT EXHIBIT THEMSELVES WITHIN THE LYRICS AND MUSICALITY OF THE SONG.



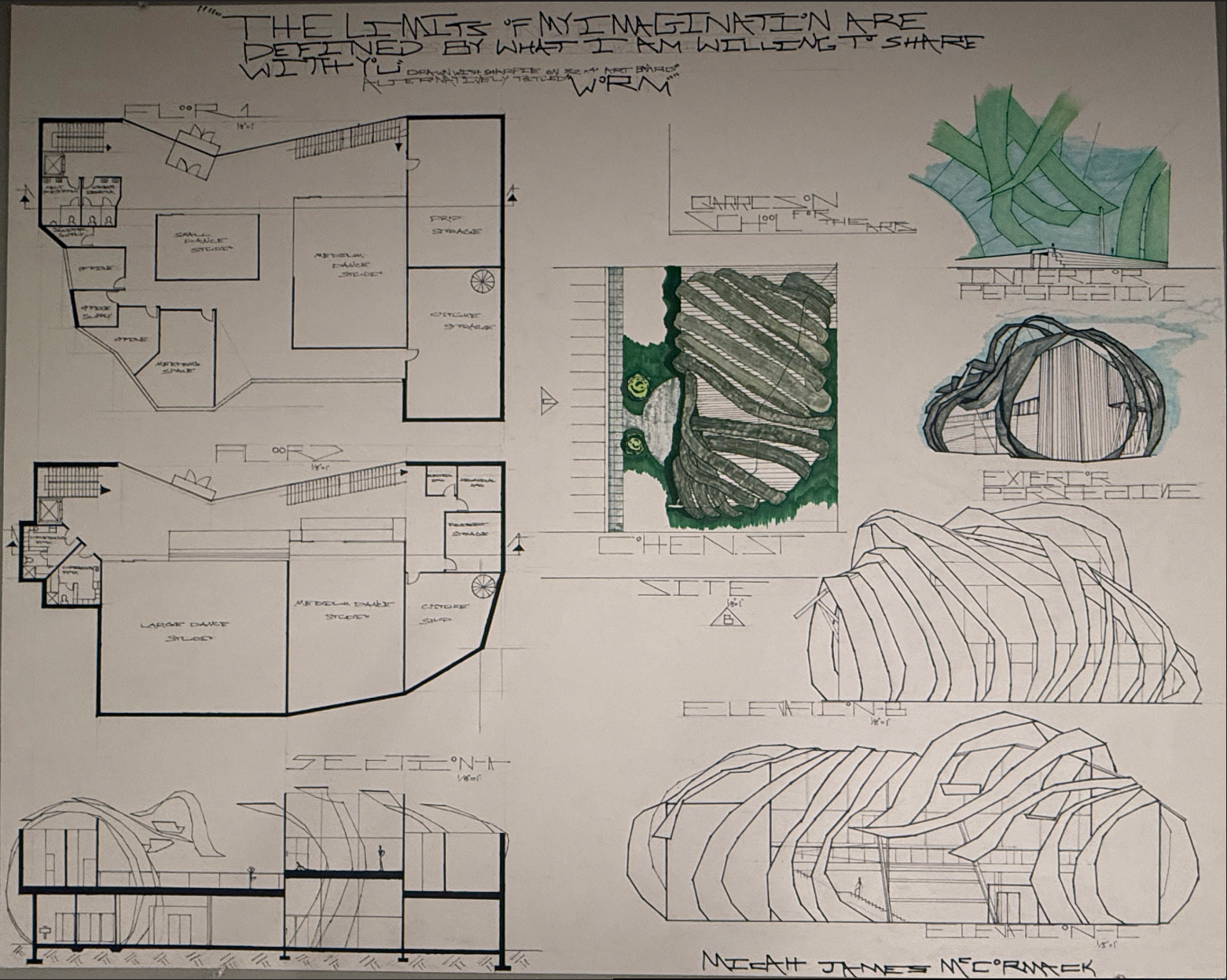


DESIGN PROCESS

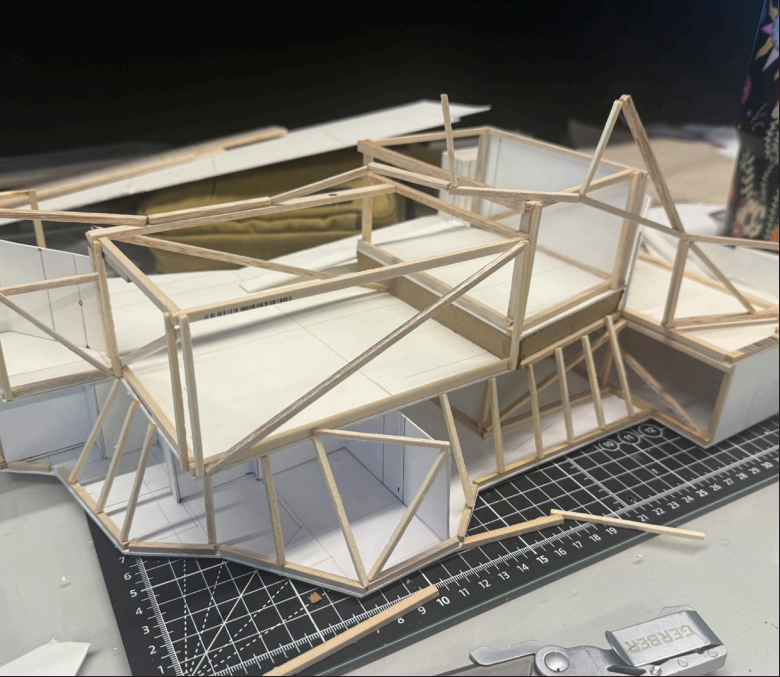
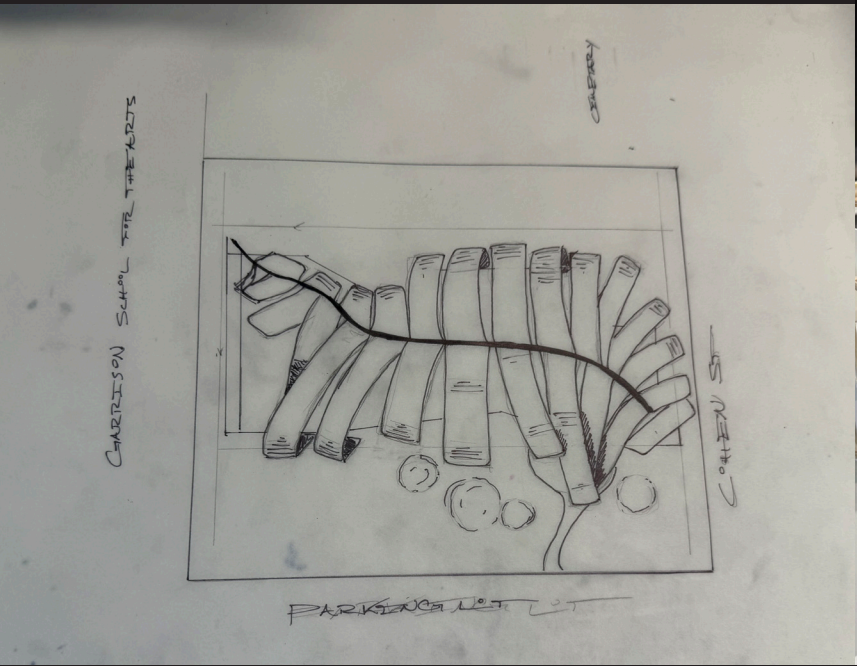
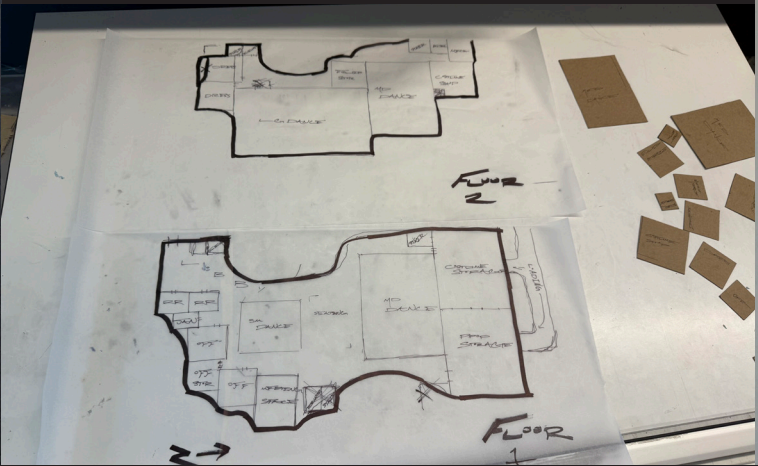
MY DESIGN PROCESS IS HIGHLY ITERATIVE AND SPATIALLY FOCUSED, I TEND TO MOVE QUICKLY FROM SKETCHING INTO STUDY MODELS IN FAVOR OF THE MORE REALISTIC SENSE OF INNER AREA AND LIGHT OFFERED BY A MODEL.



DANCE STUDIO



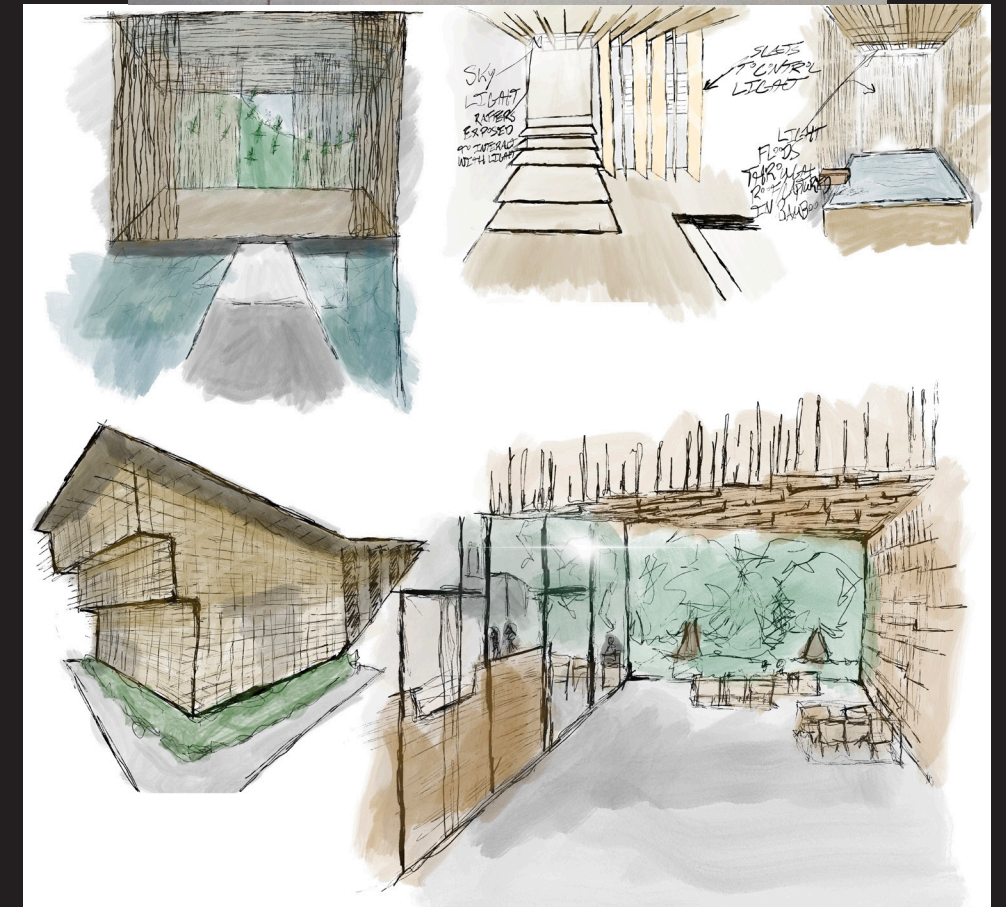
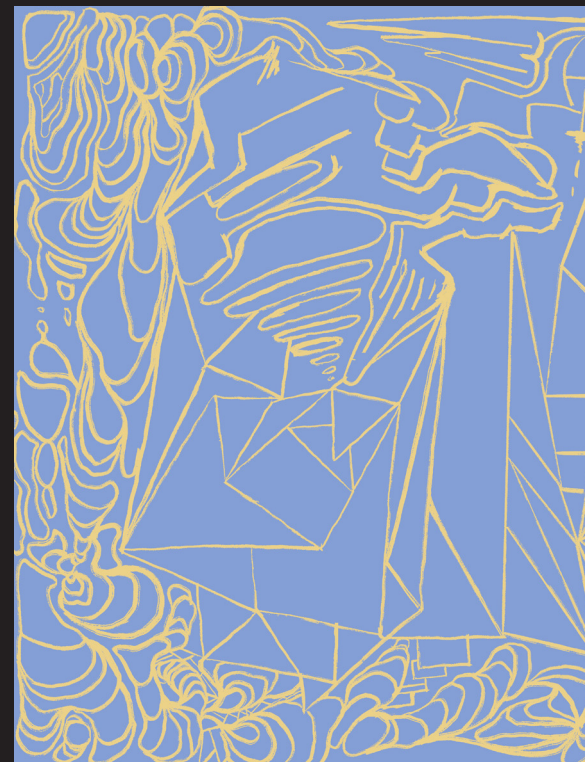
THE DANCE STUDIO PROJECT WAS ONE OF CONTINUAL ITERATION UNTIL THE DEADLINE, CHANGE AFTER CHANGE LED UP TO SOMETHING IM TRULY PROUD OF. IT'S STAND OUT APPEARANCE AND METICULOUS DESIGN QUALITIES COME TOGETHER IN A HIGHLY UNIQUE CONCEPT OUTSIDE OF THE SCOPE OF ANYTHING IVE PREVIOUSLY DESIGNED.



PARALLEL CREATION



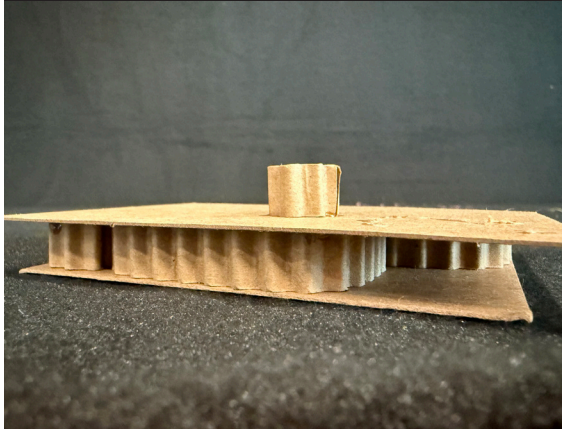
FROM PHOTOGRAPHY, TO PAINTING, TO POETRY, I FIND THAT CREATING IN PARALLEL TO THE ARCHITECTURAL DESIGN PROCESS PREVENTS STAGNATION OF THE CREATIVE MIND AND ASSISTS IN THE PERSISTENCE OF ABSTRACT THOUGHT. ACHIEVING UNIQUE DESIGN DEMANDS THOUGHT BEYOND THE STUDIO ENVIRONMENT.



A 3D architectural rendering of a modern building, likely a pavilion or museum, situated on a sandy beach. The building features a prominent, curved, cantilevered roof structure supported by several thick, cylindrical columns. The facade is composed of large, square panels with a decorative, star-like or geometric pattern. The building is elevated on a low, wide concrete base. In the background, there are rolling green hills under a clear blue sky with a few scattered clouds. The foreground is a vast, sandy beach with some small, dark objects scattered across it.

Buddha' s Guest House

FINAL: CHAPPELL PROJECT



THE CLOSING PROJECT OF THE SEMESTER, BUDDHAS GUEST HOUSE, WAS AN EXPLORATION INTO THE SPIRITUAL SIDE OF ARCHITECTURE USING A PASSIVE SOLAR DESIGN. A SERIES OF RAPIDLY EVOLVED CONCEPTS DONE OVER A 48 HOUR PERIOD RESULTED IN A SIMPLE DESIGN CONSISTENT WITH THE STRAIGHTFORWARD YET MULTIFACETED NATURE OF BUDDHISM.

